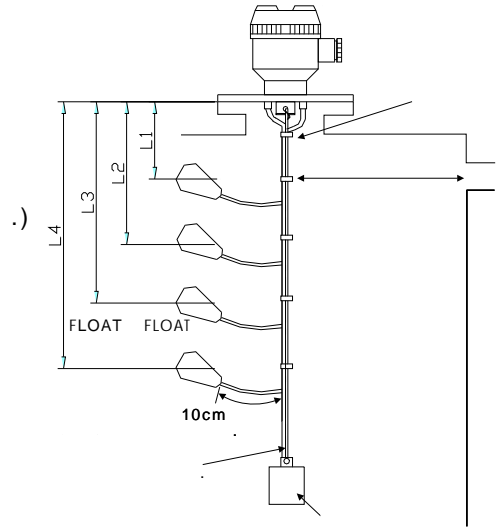


QUICK FLOAT TYPE LEVEL SWITCHES INSTRUCTION MANUAL

- CDQ-1 ()
- CDQ-2 .
- CDQ-3 .
- CDQ-4 .

- 1. PANEL 가
- 2. FLOAT 가
- 3. 가
- 4. FLANGE (ROPE)
- 5. (ROPE) FLOAT
- 6. FLOAT CABLE 가 (FLOAT 10cm 가 .)
- 7. FLOAT 가
- 8. FLOAT FLOAT 가 FLOAT가



POWER : AC110V/220V					RATING : 2A / 250V Max		
SENSOR					POWER		
H/A	STOP	START	L/A	COM	0V	110V	220V
1	2	3	4	5	6	7	8
INPUT : FROM SENSOR				OUTPUT : H/A, CON, L/A			
CONTROL		LOW		HIGH		BUZZER	
9	10	11	12	13	14	15	16

- 1. .(110V-6,7 , 220V-6,8)
- 2. 가 . (9,10)
- 3. SUPPLY-DRAIN . (9,10)
- 3-1. SENSOR FLOAT
- 3-2. FLOAT FLOAT 4 (LOW ALARM 5)
- 3-3. FLOAT FLOAT 3 ()
- 3-4. : START , FLOAT 2 : STOP ()
- 3-5. : STOP FLOAT 1 : START ()
- 4. (HIGH : 13,14 , LOW : 11,12)

- 1. (FLOAT) . (. - A)
- 2. SENSOR (5)
- 3. (FLOAT)
- 4. FLOAT가
- 5. FLOAT 가
- 6. 가
- 7.
- 8. (50'C) FLOAT 가
- 9. FLOAT MICRO S/W 가 . (DC24V, AC110V)
- 10. FLOAT CVVS
- 11.
- 12. A/S 1

가 ()
 426-5
 2 706
 TEL : 02) 2025-8188
 FAX : 02) 2025-8187
 www.cdikorea.com